

FWD»»CENTER

FINGER LAKES WORKFORCE DEVELOPMENT CENTER

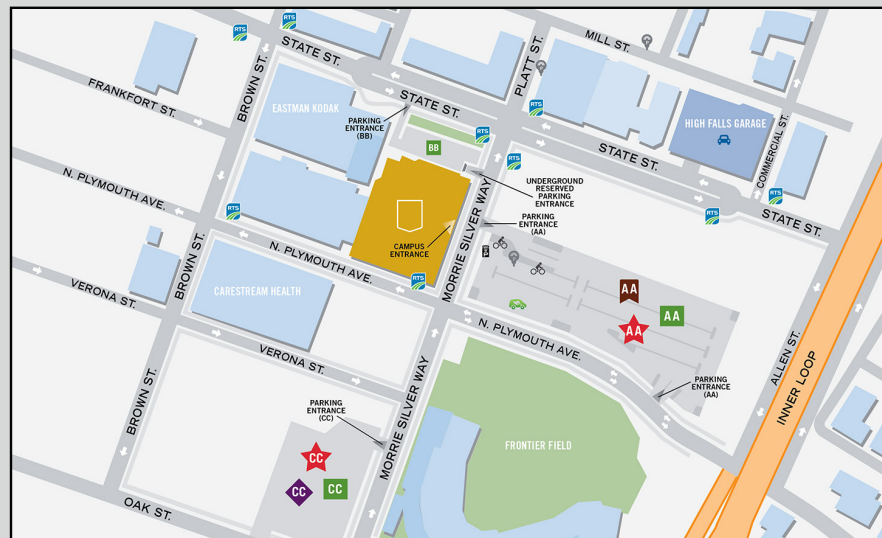
Powered by **Monroe Community College**

The FWD Center occupies the 5th and 6th floors of MCC's Downtown Campus. The training center is designed to focus on rapid training, retraining and upskilling of technical middle-skilled workers that continue to be needed as technicians by local employers. With a focus on short-term and accelerated training programs in technology-oriented careers and Industry 4.0 skill-sets, programming at the FWD Center links education with the evolving demands of the regional workforce.

Class Location:

FWD Center • 321 State St, 5th Floor • Rochester, NY 14608

To learn more about the FWD Center visit www.FWD-Center.com.



Registration Deadlines

Please check the website for exact dates.

July registration deadline for August (Fall Semester) start dates.

December registration deadline for January (Spring Semester) start dates.

• Register online at: FWD-Center.com/program

• By phone: 585-685-6FWD (6393)

Questions? Please contact George Merz at (585) 685-6112 or gmerz2@monroecc.edu.

Other Degrees

MONROE COMMUNITY COLLEGE ALSO OFFERS DEGREE PROGRAMS FOR SEVERAL SKILLED TRADES:

- **Heating, Ventilation, and Air Conditioning A.A.S.**
Provides a well-rounded education in HVAC technology and a thorough understanding of the theory and applications for systems operation.
- **Solar Thermal Technology Certificate**
Gain essential information and training to install and work with solar thermal systems including: fundamentals of collecting and transferring solar heat.
- **Construction Technologies A.A.S.**
Our construction technology degree offers a practical introduction to all aspects of construction management, including hands-on experience with the most current construction technology.

TO LEARN MORE ABOUT THESE DEGREE PROGRAMS GO TO WORKFORCEFORWARD.COM/DEGREES.

Non-Profit Org.
U.S. Postage
PAID
Rochester, NY
Permit No. 92

FWD»»CENTER

FINGER LAKES WORKFORCE DEVELOPMENT CENTER

Powered by **Monroe Community College**

SKILLED TRADES & CONSTRUCTION TECHNOLOGIES

FWD CENTER
321 State Street, 5th Floor
www.FWD-Center.com
585-685-6FWD

FWD»»CENTER

FINGER LAKES WORKFORCE DEVELOPMENT CENTER

Powered by **Monroe Community College**



**INCREASE YOUR
SKILL & YOUR
POTENTIAL**

SKILLED TRADES & CONSTRUCTION TECHNOLOGIES

Construction » Electrical » Plumbing/Pipefitting » Project Supervision



Construction Core

CONSTRUCTION CORE COURSES BEGIN IN AUGUST FOR THE FALL SEMESTER & IN JANUARY FOR THE SPRING SEMESTER. SCAN THE QR CODE FOR DETAILS.

These 99-hour training programs are focused on building your skills. If you are currently participating in a NYSDOL registered apprenticeship program in the trades, this credit can be applied to your program.

CONSTRUCTION ESSENTIALS

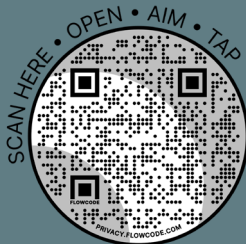
This course provides the fundamental skills required in the Construction Trades. Topics include basic construction, construction safety, practical math as applied to the construction trades, introduction to blueprint reading, basic rigging, and introduction to hand and power tools.
T & TH | 5:30PM-8:30PM
COST \$1,200

PROJECT SUPERVISION

Project supervision topics of study will include effective communication skills, introduction to leadership skill development, key elements of an effective safety program, scheduling work and resource control.
LOCATION: ONLINE
COST \$1,200



Register online at:
www.FWD-Center.com/program



For more information contact
George Merz at 585-685-6112 or
gmerz2@monroecc.edu

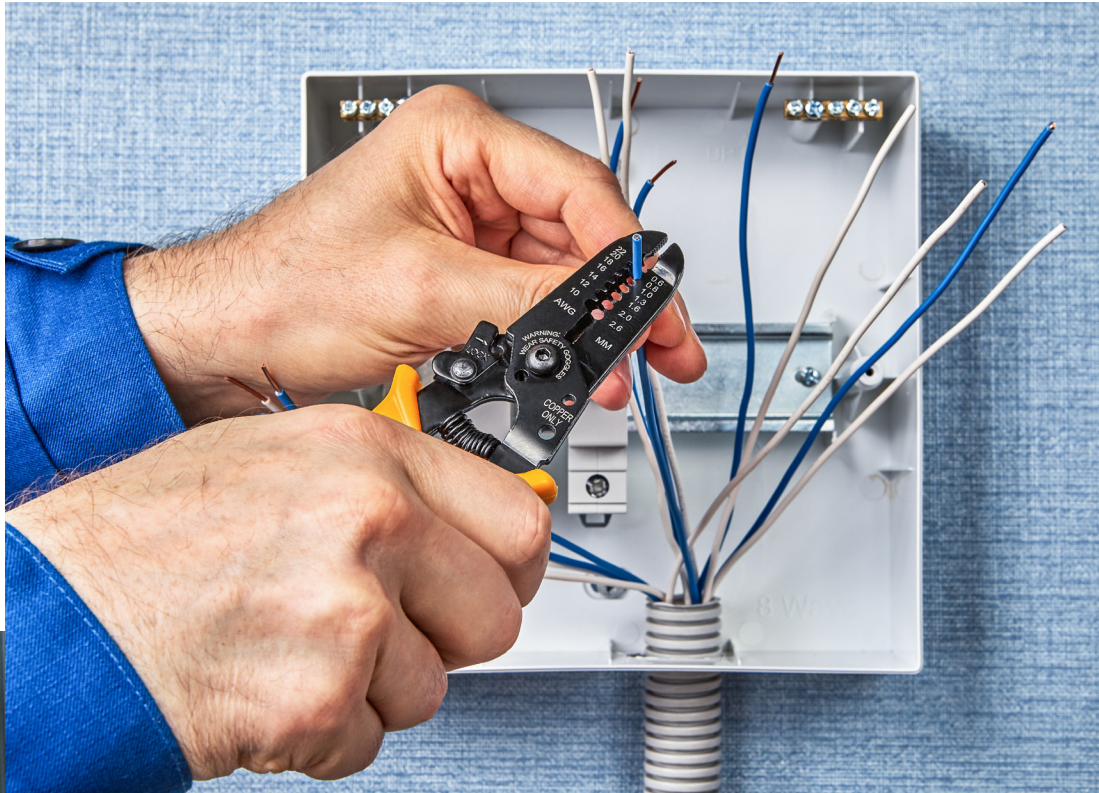
Electrician

ELECTRICIAN COURSES BEGIN IN AUGUST FOR THE FALL SEMESTER & IN JANUARY FOR THE SPRING SEMESTER. SCAN THE QR CODE FOR DETAILS.

Each semester of electrical training provides 99 hours of classroom training, 21 of which are National Electrical Code (NEC) related instruction. If you are currently participating in a NYSDOL registered apprenticeship program in the trades, this credit can be applied to your program.

ELECTRICAL THEORY & DEVICES (LEVELS 1A, B)

This course provides an overview to the electrical trade, electrical safety, and electrical circuits and theory. Participants will be introduced to the National Electrical Code (NEC); device boxes; raceways and fittings; conductors and cables; basic electrical construction drawings; residential electric services; and electrical test equipment.
M & W | 5:30PM-8:30PM
COST \$1,200



CONDUCTOR INSTALLATION & DEVICES (LEVELS 2A, B)

This course teaches about alternating current, AC & DC Motors; handling and installation of lighting fixtures; how to bend conduit; selecting and sizing junction boxes; procedures for cables pulls in raceways and cable trays; National Electrical Code (NEC) requirements.
M & W | 5:30PM-8:30PM
COST \$1,200

INTRODUCTION TO MOTOR CONTROLS (LEVELS 3A, B)

Course introduces participants about conductor storage, set up, transportation and installation; procedures for cable pulls in raceways and cable trays. National Electrical Code (NEC) requirements including modifications and installations.
M & W | 5:30PM-8:30PM
COST \$1,200

MOTOR CONTROLS APPLICATION (LEVELS 4A, B)

This course will learn motor operation and preventative maintenance; troubleshooting procedures; solid-state controls; commercial/industrial lighting; National Electrical Code (NEC) for special locations; basic overview HVAC systems; specialty transformers.
M & W | 5:30PM-8:30PM
COST \$1,200

Pipe Trades

PLUMBING AND PIPE TRADE COURSES BEGIN IN AUGUST FOR THE FALL SEMESTER & IN JANUARY FOR THE SPRING SEMESTER. SCAN THE QR CODE FOR DETAILS.

These 114-hour training programs are focused on building your skills. If you are currently participating in a NYSDOL registered apprenticeship program in the trades, this credit can be applied to your program.

INTRO TO PLUMBING (LEVEL 1A, B)

This course covers the proper applications of code-approved fixtures in plumbing installations; introduction to Drain, Waste, and Vent (DWV) systems, functions and components; identifies major components of water distribution systems and their function.
T & TH | 5:30PM-8:30PM
COST \$1,200

PLUMBING-DRAWINGS & SYSTEMS (LEVELS 2A, B)

This course teaches the proper techniques for installing and testing water systems; installation of basic fixtures; installing various water heaters; and an introduction to the principles of electricity.
T & TH | 5:30PM-8:30PM
COST \$1,200

PLUMBING (LEVEL 3)

Course content includes applied math; sizing water supply systems; how to treat water supply systems; types of backflow prevention devices; sizing DWV and storm systems; sewage pumps and sump pumps; corrosive-resistant waste wiping; principles of compressed air systems.
T & TH | 5:30PM-8:30PM
COST \$1,200

PLUMBING (LEVEL 4)

Course content includes Business Principles, Water Pressure Booster; Codes, Private Water Supply Systems, Specialized Plumbing Applications.
T & TH | 5:30PM-8:30PM
COST \$1,200



PIPEFITTING (LEVEL 3)

This course covers rigging practices; pipefitting standards, codes and specifications; trade math; above ground pipe installation, hangers and supports; how to test piping systems, such as service flow test and hydrostatic tests.
T & TH | 5:30PM-8:30PM
COST \$1,200

PIPEFITTING (LEVEL 4)

This course includes instruction for advanced blueprinting; pipe fabrication, steam traps, special piping, and maintaining valves.
T & TH | 5:30PM-8:30PM
COST \$1,200